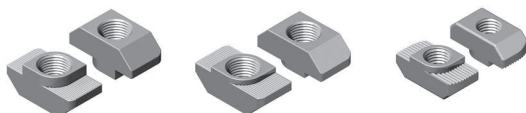


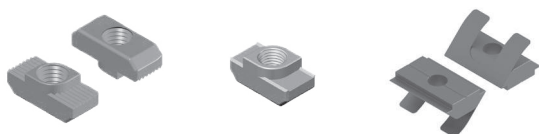
ELEMENTOS DE FIJACIÓN

FASTENING ELEMENTS

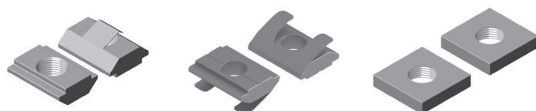
página/page 10



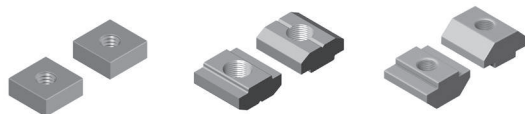
página/page 11



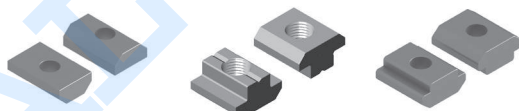
página/page 12



página/page 13



página/page 14



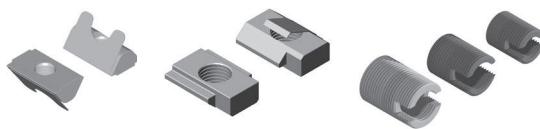
página/page 15



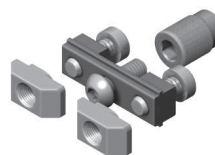
página/page 16



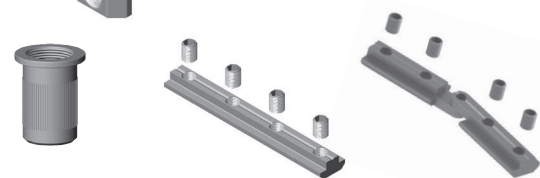
página/page 17



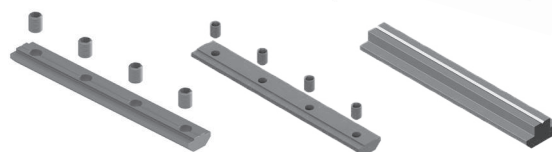
página/page 18



página/page 19



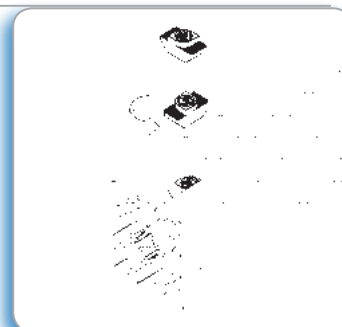
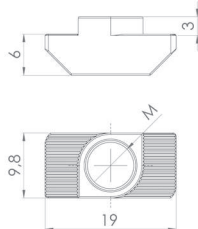
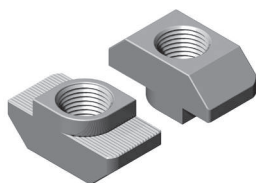
página/page 20



página/page 21



Tuerca cabeza martillo Acero zincado / Inox
Hammer head nut Zinc plated steel / Stainless



52014		M4	0,008
52015		M5	0,007
52016		M6	0,007
52018		M8	0,006
52016-Inox.		M6	0,007
52018-Inox.		M8	0,006

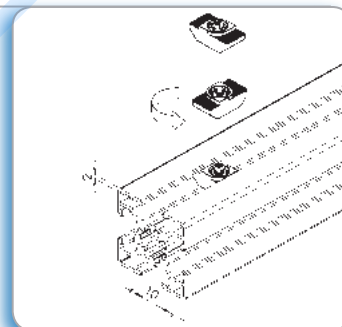
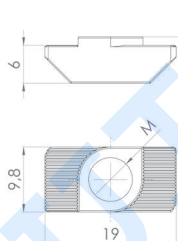
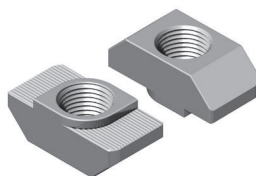
Aplicación

Para fijar elementos a los perfiles con canal de 10 mm. Posibilidad de inserción desde cualquier parte del perfil mediante giro.

Application

Used for the assembly of accessories on profiles with 10 mm slot. Nuts can be inserted sideways along the profile slot.

Tuerca cabeza martillo baja Acero zincado
Hammer head nut, low neck Zinc plated steel



52064		M4	0,006
52065		M5	0,006
52066		M6	0,005
52068		M8	0,005

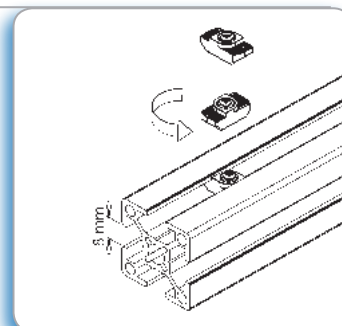
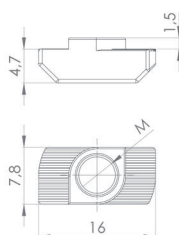
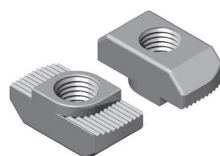
Aplicación

Para fijar elementos a los perfiles con canal de 10 mm y patilla 2 mm. Posibilidad de inserción desde cualquier parte del perfil mediante giro.

Application

Used for the assembly of accessories on profiles with 10 mm slot and 2mm thickness. Nuts can be inserted sideways along the profile slot.

Tuerca cabeza martillo, canal 8 mm Acero zincado
Hammer head nut, 8 mm slot Zinc plated steel



Aplicación

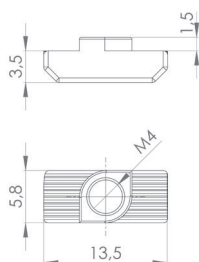
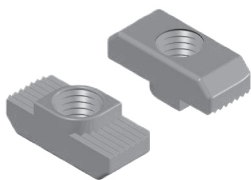
Para fijar elementos a los perfiles con canal de 8 mm. Posibilidad de inserción desde cualquier parte del perfil mediante giro.

Application

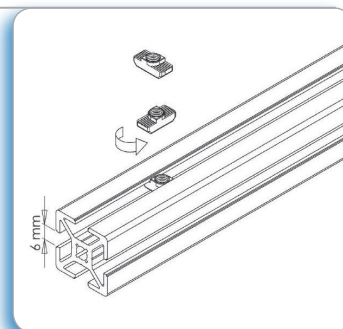
Used for the assembly of accessories on profiles with 8 mm slot. Nuts can be inserted sideways along the profile slot.

52074		M4	0,004
52075		M5	0,003
52076		M6	0,003

Tuerca cabeza martillo perfil 25 Acero zincado
Hammer head nut, profile 25 Zinc plated steel



25



Aplicación

Para fijar elementos a los perfiles serie 25, canal 6 mm. Posibilidad de inserción desde cualquier parte del perfil mediante giro.

Application

Used for the assembly of accessories on profiles serie 25 with 6 mm slot. Nuts can be inserted sideways along the profile slot.



5208

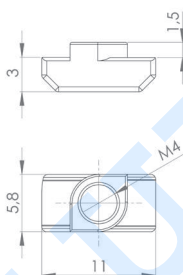
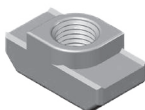


M4

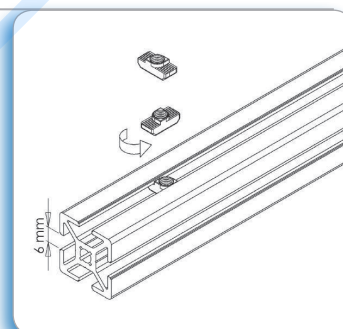


0,002

Tuerca cabeza martillo perfil 20 Acero zincado
Hammer head nut, profile 20 Zinc plated steel



20



Aplicación

Para fijar elementos a los perfiles serie 20, canal 6 mm. Posibilidad de inserción desde cualquier parte del perfil mediante giro.

Application

Used for the assembly of accessories on profiles serie 20 with 6 mm slot. Nuts can be inserted sideways along the profile slot.



5209

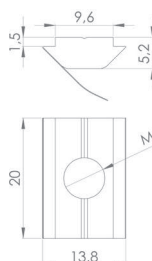
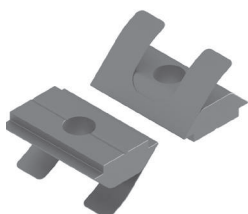


M4

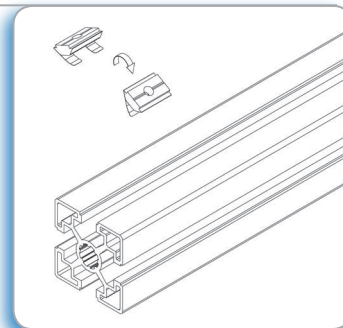


0,001

Tuerca en T con fleje Acero zincado
Spring-plate T nut Zinc plated steel



10 mm



Aplicación

Para evitar el deslizamiento de la tuerca, ésta posee un fleje flexible, soldado, que muellea. Posibilidad de inserción desde cualquier parte del perfil mediante inclinación a 45°.

Application

A welded flexible spring leaf prevents the nut from sliding. Nuts can be inserted sideways along the profile slot by swivelling 45°.



522440



M4



0,008

522540

M5

0,008

522640

M6

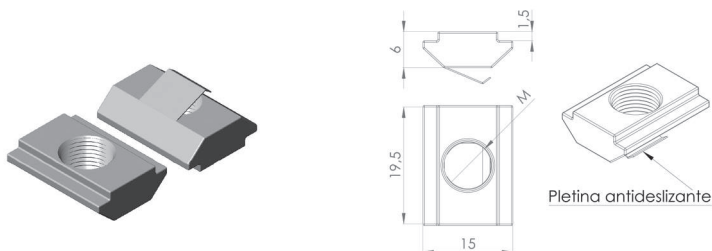
0,007

522840

M8

0,007

Tuerca en T antideslizamiento Acero zincado
Spring nut Zinc plated steel



Barcode	Thread	Weight (kg)
52024	M4	0,011
52025	M5	0,010
52026	M6	0,010
52028	M8	0,009

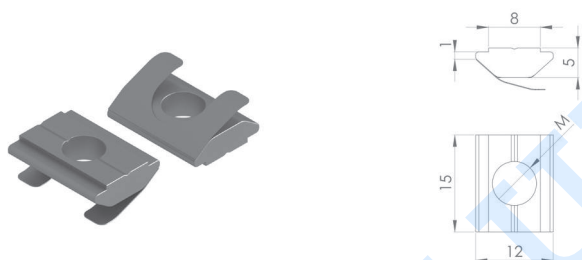
10 mm



Aplicación
 Indicada para montajes verticales. La tuerca, gracias a su pletina soldada queda fija y no desliza. Posibilidad de inserción desde cualquier parte del perfil mediante inclinación a 45°.

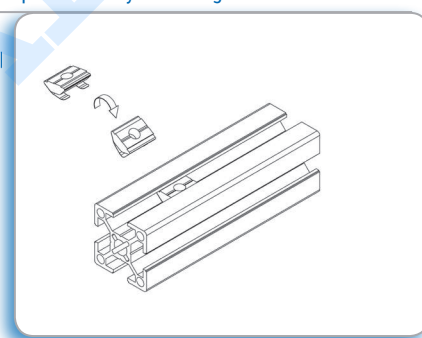
Application
 Used for the assembly of accessories on profiles with 10 mm slot. Recommended for vertical assemblies. A welded spring plate at the bottom prevents sliding once introduced in the slot. Nuts can be inserted sideways along the profile slot by swivelling 45°.

Tuerca en T con fleje, canal 8 mm Acero zincado
Spring-plate T nut, 8 mm slot Zinc plated steel



Barcode	Thread	Weight (kg)
520174	M4	0,005
520175	M5	0,005
520176	M6	0,004
520178	M8	0,004

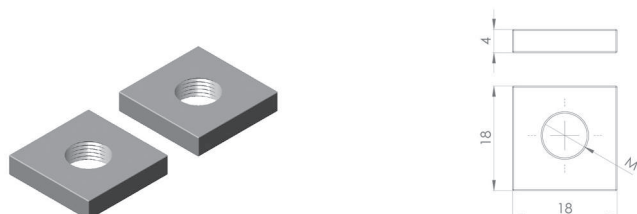
8 mm



Aplicación
 Para evitar el deslizamiento de la tuerca, ésta posee un fleje flexible, soldado, que muellea. Posibilidad de inserción desde cualquier parte del perfil mediante inclinación a 45°.

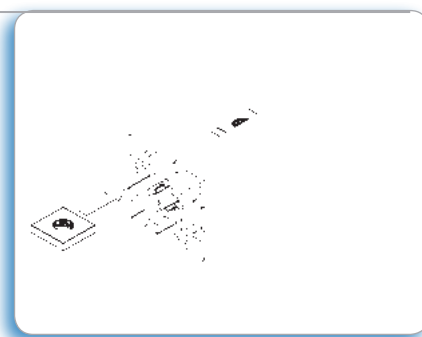
Application
 A welded flexible spring leaf prevents the nut from sliding. Nuts can be inserted sideways along the profile slot by swivelling 45°.

Tuerca cuadrada Acero zincado
Square nut Zinc plated steel



Barcode	Thread	Weight (kg)
52034	M4	0,009
52035	M5	0,009
52036	M6	0,008
52038	M8	0,008

10 mm

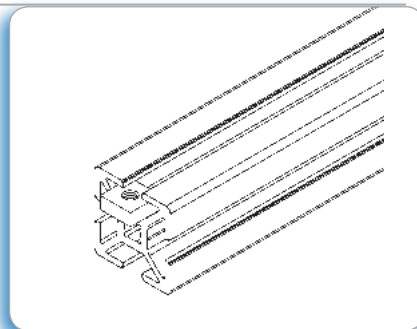
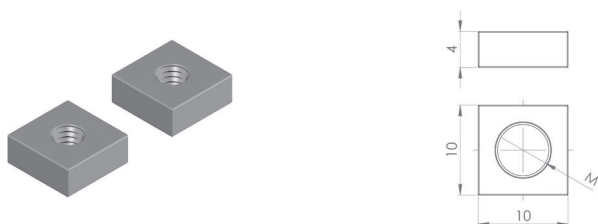


Aplicación
 Para fijar elementos a los perfiles con canal 10 mm. Debe ser introducida por el extremo del perfil.

Application
 Used for the assembly of accessories on profiles with 10 mm slot. Nuts must be inserted from the front in the profile slot.

Tuerca cuadrada, canal 6 mm Acero zincado
Square nut, 6 mm slot Zinc plated steel

25



Barcode	Thread	Weight [kg]
52084	M4	0,03
52085	M5	0,02
52086	M6	0,02

Aplicación

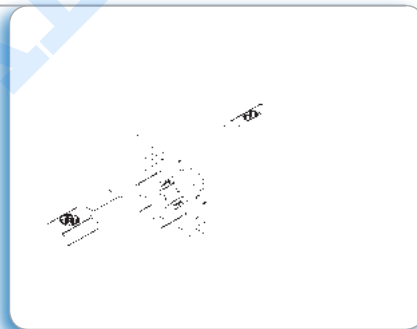
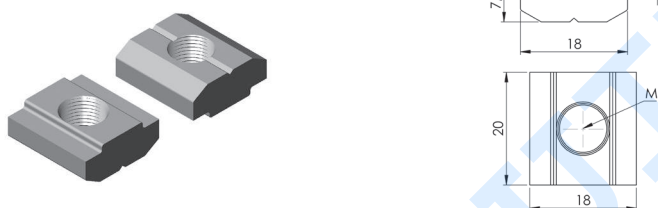
Para fijar elementos a los perfiles serie 25, con canal de 6 mm. Debe ser introducida por el extremo del perfil.

Application

Used for the assembly of accessories on profiles serie 25 with 6 mm slot. Nuts must be inserted from the front in the profile slot.

Tuerca rectangular en T Acero zincado
T-slot nut Zinc plated steel

10 mm



Barcode	Thread	Weight [kg]
52044	M4	0,016
52045	M5	0,016
52046	M6	0,015
52048	M8	0,014

Aplicación

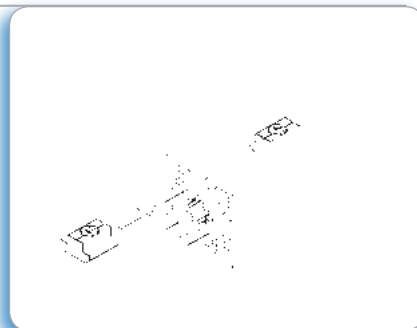
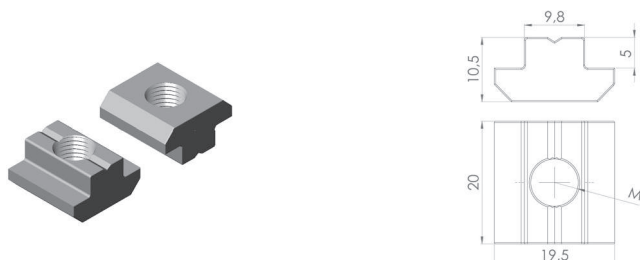
Para fijar elementos a los perfiles con canal de 10 mm. Debe ser introducida por el extremo del perfil.

Application

Used for the assembly of accessories on profiles with 10 mm slot. Nuts must be inserted from the front in the profile slot.

Tuerca en T cuello alto Acero zincado
Heavy duty T-slot nut Zinc plated steel

10 mm



Barcode	Thread	Weight [kg]
52054	M4	0,021
52055	M5	0,020
52056	M6	0,020
52058	M8	0,019

Aplicación

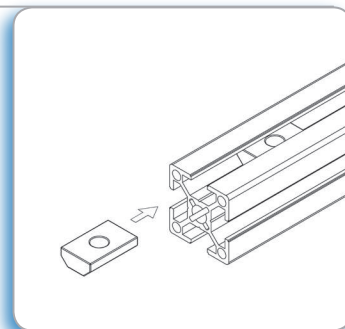
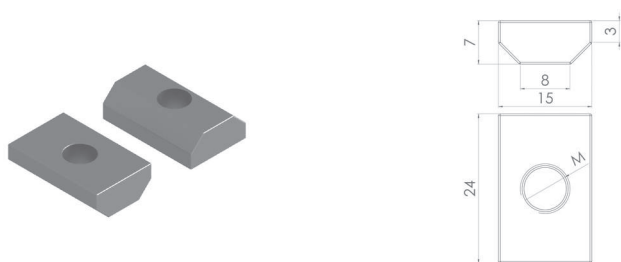
Para fijar elementos a los perfiles con canal de 10 mm. Permite aplicar grandes fuerzas. Debe ser introducida por el extremo del perfil.

Application

Used for the assembly of accessories on profiles with 10 mm slot. Recommended for very heavy duty fastening applications. Nuts must be inserted from the front in the profile slot.

Tuerca rectangular lisa, canal 8 mm Acero zincado
Flat rectangular nut, 8 mm slot Zinc plated steel

8 mm



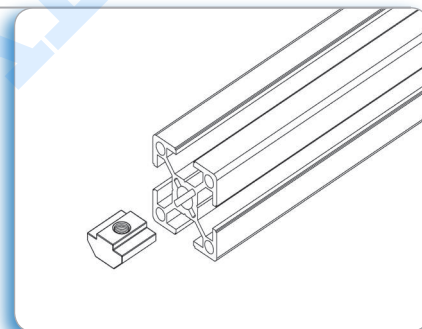
Aplicación
 Para fijar elementos a los perfiles con canal de 8 mm. Debe ser introducida por el extremo del perfil.

Application
 Used for the assembly of accessories on profiles with 8 mm slot. Nuts must be inserted from the front in the profile slot.

Barcode	Thread	Weight (Kg)
9144	M4	0,016
9145	M5	0,016
9146	M6	0,015
9148	M8	0,014

Tuerca rectangular en T, canal 8 mm Acero zincado
T-slot nut, 8 mm slot Zinc plated steel

8 mm



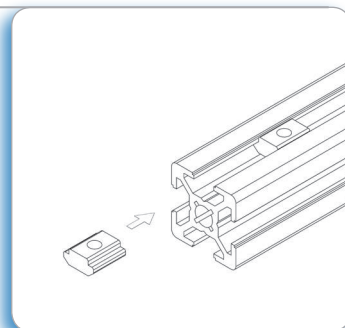
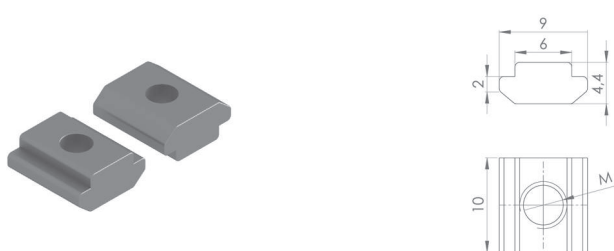
Aplicación
 Para fijar accesorios a los perfiles con canal de 8 mm. Debe ser introducida por el extremo del perfil.

Application
 Used for the assembly of accessories on profiles with 8 mm slot. Nuts must be inserted from the front in the profile slot.

Barcode	Thread	Weight (Kg)
52094	M4	0,014
52095	M5	0,013
52096	M6	0,012
52098	M8	0,012

Tuerca en T, canal 6 mm Acero zincado
T-slot nut, 6 mm slot Zinc plated steel

20



Aplicación
 Para fijar elementos a los perfiles serie 20, canal 6 mm. Debe ser introducida por el extremo del perfil.

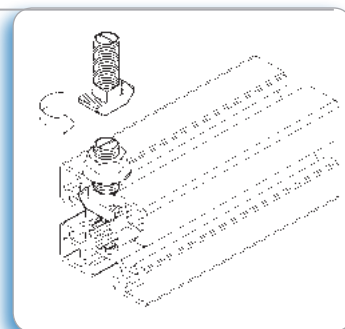
Application
 Used for the assembly of accessories on profiles serie 20 with 6 mm slot. Nuts must be inserted from the front in the profile slot.

Barcode	Thread	Weight (Kg)
52091	M4	0,002
52092	M5	0,002

Tornillo cabeza martillo + tuerca, canal 10 mm Acero 8.8 zincado / Inox
Hammer head bolt + hex flange nut, 10 mm slot Zinc plated steel 8.8 / Stainless

INOX

10 mm

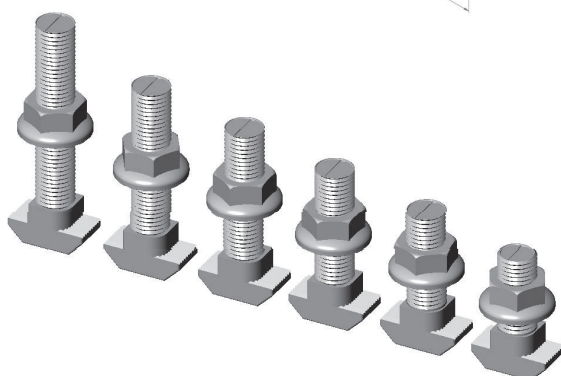
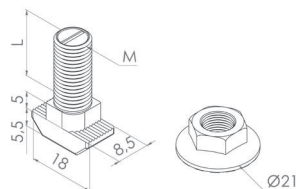


Aplicación

Para la fijación de accesorios a los perfiles de canal 10 mm. Gracias al dentado de la tuerca y a su mayor diámetro (21 mm), la fijación es máxima.

Application

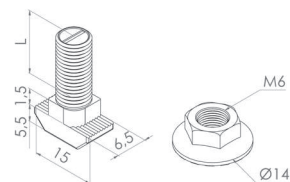
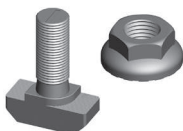
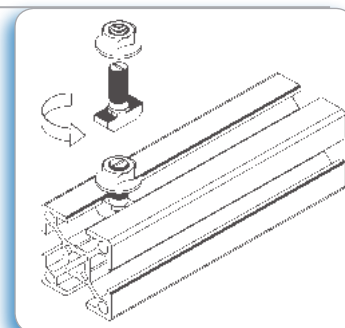
For fixing accessories on profiles with 10 mm slot. Due to the bottom serrations and the larger diameter of the nut (21 mm), fixing is optimum.



525020	M8x20	0,021
525025	M8x25	0,023
525030	M8x30	0,024
525035	M8x35	0,026
525040	M8x40	0,027
525050	M8x50	0,031
525070	M8x70	0,037
525025-Inox.	M8x25	0,023
525070-Inox.	M8x70	0,037

Tornillo cabeza martillo + tuerca, canal 8 mm Acero 8.8 zincado
Hammer head bolt + hex flange nut, 8 mm slot Zinc plated steel 8.8

8 mm



525116	M6x16 mm	0,009

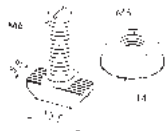
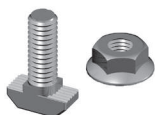
Aplicación

Para la fijación de accesorios a los perfiles de boca 8 mm. Gracias al dentado de la tuerca, la fijación es máxima.

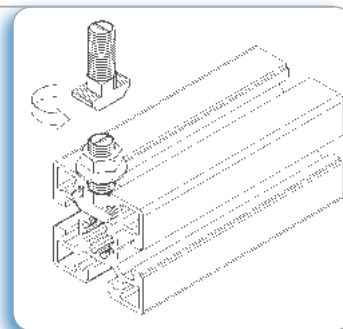
Application

For fixing accessories on profiles with 8 mm slot. Due to the bottom serrations of the nut, fixing is optimum.

Tornillo cabeza martillo + tuerca, canal 6 mm Acero 8.8 zincado
Hammer head bolt + hex flange nut, 6 mm slot Zinc plated steel 8.8



- 25 -



525113

M6x13 mm

0,008

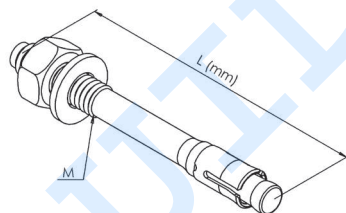
Aplicación

Para la fijación de elementos a los perfiles de canal 6 mm. Gracias al dentado de la tuerca, la fijación es máxima.

Application

For fixing accessories on profiles with 6 mm slot. Due to the bottom serrations of the nut, fixing is optimum.

Taco de expansión Acero zincado
Through bolt anchor Zinc plated steel



5290

M10x90 mm

0,057

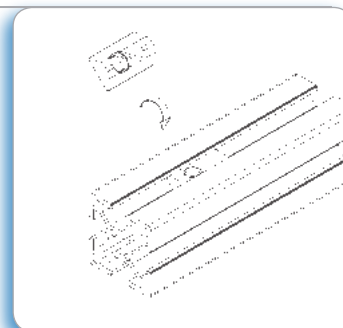
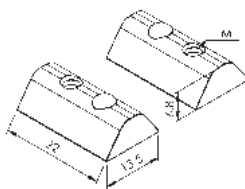
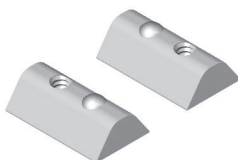
Aplicación

Para la fijación de forma segura de soportes y placas al suelo.

Application

To firmly join and secure positioning elements to the floor.

Tuerca redonda con bola Acero zincado
Spring-ball nut Zinc plated steel



5064

M4

0,011

5065

M5

0,011

5066

M6

0,010

5068

M8

0,009

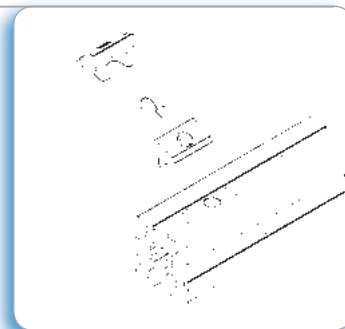
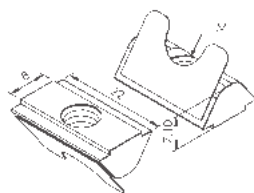
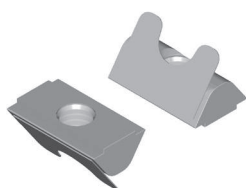
Aplicación

Para fijación de elementos a distintos perfiles de canal 8 mm.

Application

For fixing accessories on different profiles with 8 mm slot.

Tuerca redonda con pestaña Acero zincado
Spring-plate nut Zinc plated steel



Aplicación

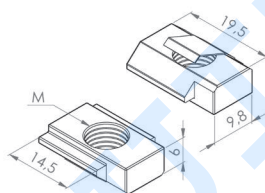
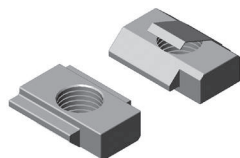
Para fijación de elementos a distintos perfiles de canal 8 mm.

Application

For fixing accessories on different profiles with 8 mm slot.

Barcode	Thread	Weight (kg)
5074	M4	0,012
5075	M5	0,011
5076	M6	0,011
5078	M8	0,009

Refuerzo antigiro Acero zincado
Anti-rotation nut Zinc plated steel



10 mm



Aplicación

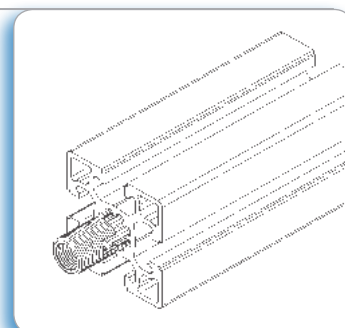
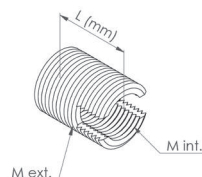
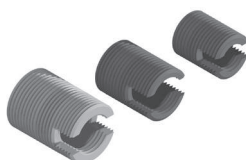
Para evitar el giro en aquellos perfiles unidos con tornillo autorroscante. Posibilidad de inserción desde cualquier parte del perfil mediante inclinación 45°.

Application

To avoid rotation of profiles when using socket T bolts. Used on profiles with 10 mm slot. Nuts can be inserted sideways along the profile slot by swivelling 45°.

Barcode	Thread	Weight (kg)
5512	M8	0,008

Casquillo reductor Acero zincado
Threaded inserts Zinc plated steel



Aplicación

Permite roscar accesorios de M8, M10, M12 en el núcleo central de los perfiles. Se recomienda su uso en estructuras sometidas a vibraciones.

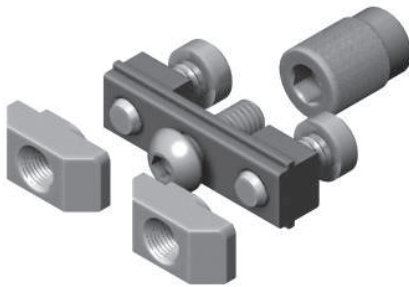
Application

Suitable for front assembly of accessories with M8, M10, M12 thread. Recommended for connexion of profiles subjected to vibrations.

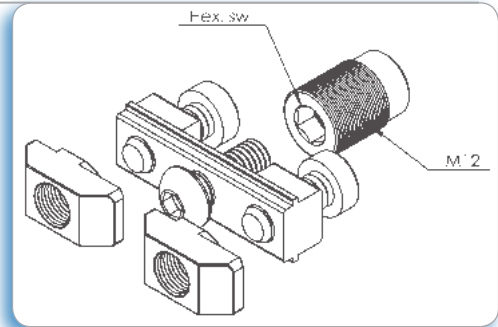
Barcode	Ø.int.	Ø.ext.	L	Weight (kg)
52918	M8	M12	15 mm	0,005
529110	M10	M14	18 mm	0,007
529112	M12	M16	22 mm	0,011

Fijación ajustable oculta Acero zincado
Adjustable connector Zinc plated steel

10 mm
 1/2"
 1/2"



No necesita mecanización
No Machinning needed






Aplicación

Garantiza una unión de perfiles óptima en posicionado y transmisión de fuerza. De uso en perfiles con canal de 10 mm. No necesita mecanización.

Application

Guarantees an optimum connection of profiles in terms of positioning and force transmission. Profiles need no machining.

		
5213	40x40	0,051
5212	45x45	0,054
5214	60x60	0,057
5215	40x80 / 80x80	0,054
5216	45x90 / 90x90	0,082

Paso 1

Insertar y enroscar el casquillo con ayuda de una llave allen

Paso 2

Comprobar que está introducido en su totalidad

Paso 3

Colocar la brida y fijarla atornillando el tornillo ISO.
 Colocar las dos tuercas cabeza de martillo con sus tornillos DIN

Paso 4

Comprobar que la brida está atornillada a tope

Paso 5

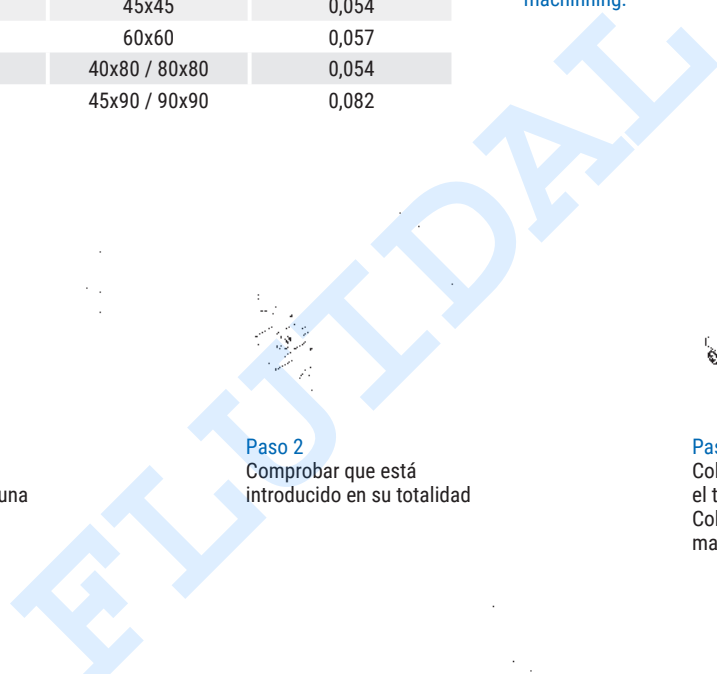
Colocar el perfil que se desea unir en posición

Paso 6

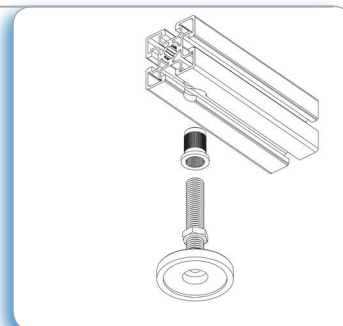
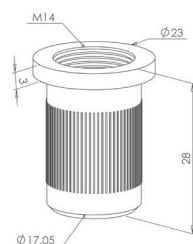
Juntar los perfiles introduciendo la fijación ajustable en el canal del perfil a unir.

Paso 7

Apretar los dos tornillos DIN, de manera que hagan girar las tuercas cabeza de martillo y aseguren la unión de los perfiles



Encaje de rosca Acero zincado
Threaded sleeve Zinc plated steel



Aplicación
Para roscar accesorios en los laterales de los perfiles.

Application
To thread accessories in profile sides.



5291

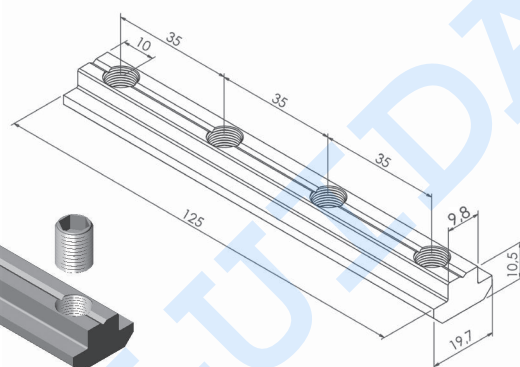
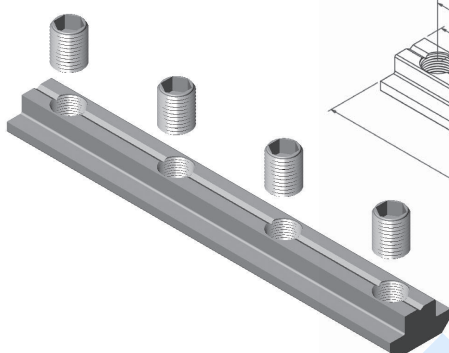


M14



0,024

Regleta de unión de perfiles Acero zincado
Heavy duty T-slot bar profile Zinc plated steel



Aplicación
Para la unión longitudinal de dos perfiles de canal 10 mm. El suministro incluye 4 espárragos M8. Esta unión no necesita mecanización.

Application
Suitable for the longitudinal connection of two profiles with 10 mm slot. Standard supply includes 4 M8 screws. Profiles need no machining.



5210125



125 mm

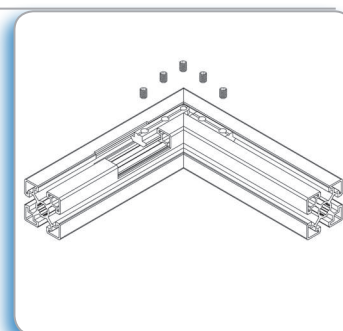
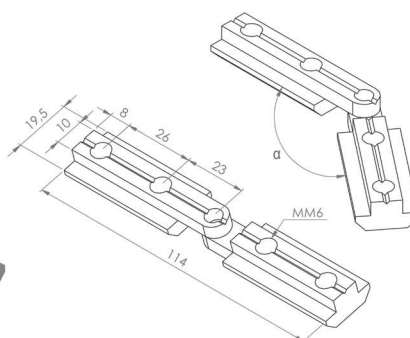
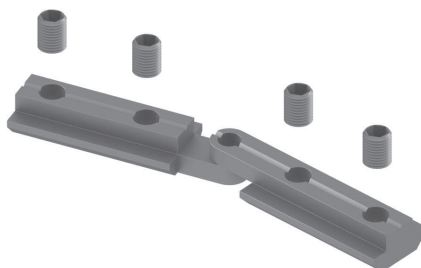


4 x M8



0,131

Regleta articulada lateral Acero zincado
Articulated profile bar Zinc plated steel



Aplicación
Para la unión en ángulo de dos perfiles en ángulo, de canal 10 mm. El suministro incluye 4 espárragos M8. Esta unión no necesita mecanización.

Application
Suitable for angle connection of two profiles cut at angles with 10 mm slot. Standard supply includes 4 M8 screws. Profiles need no machining.



52101



125 mm

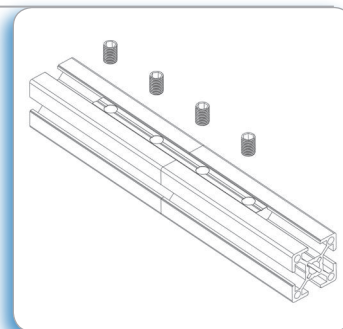
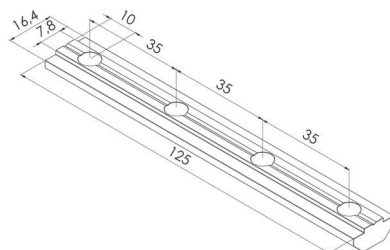
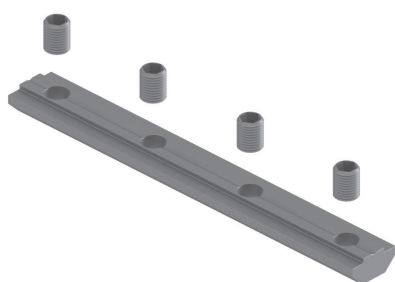


0,107

α

$90^\circ < \alpha < 270^\circ$

Regleta de unión de perfiles, canal 8 mm Acero zincado
T-slot profile bar, 8 mm slot Zinc plated steel

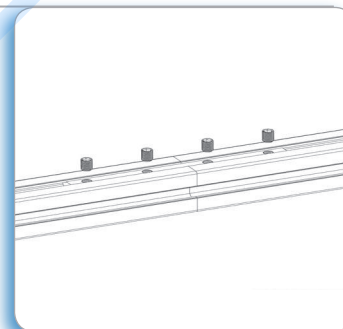
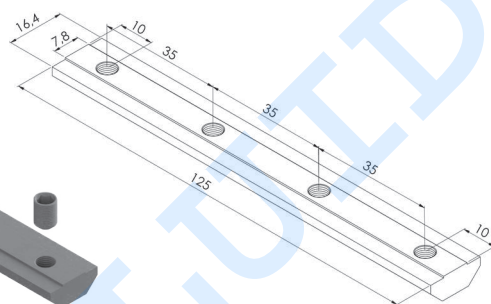
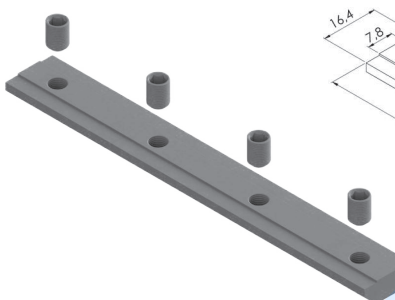


Aplicación
 Para la unión longitudinal de dos perfiles de canal 8 mm. El suministro incluye 4 espárragos M8. Esta unión no necesita mecanización.

Application
 Suitable for the longitudinal connection of two profiles with 8 mm slot. Standard supply includes 4 M8 screws. Profiles need no machining.

5210126 125 mm 0,12

Regleta de unión de perfiles, canal 8 mm Aluminio anodizado
T-slot profile bar, 8 mm slot Anodized aluminium

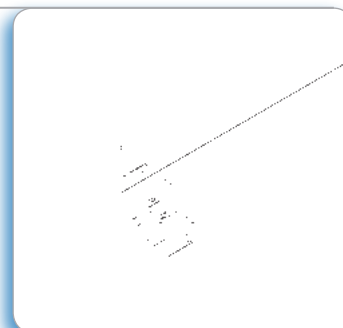
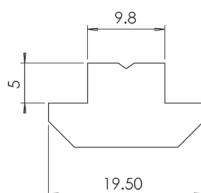
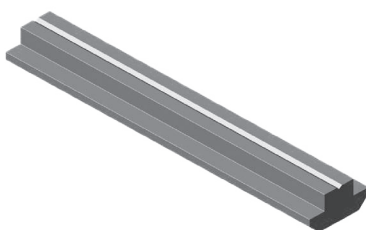


Aplicación
 Para la unión longitudinal de dos perfiles de canal 8 mm. El suministro incluye 4 espárragos M8. Esta unión no necesita mecanización.

Application
 Suitable for the longitudinal connection of two profiles with 8 mm slot. Standard supply includes 4 M8 screws. Profiles need no machining.

5210130 125 mm 0,029

Perfil en T cuello alto Acero
Heavy duty T-slot profile Steel

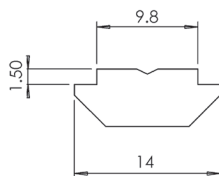
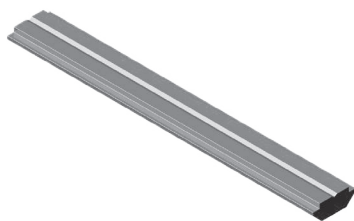


Aplicación
 Para fijar accesorios a los perfiles con canal de 10 mm. El perfil debe ser introducido por el extremo. Acero sin tratar.

Application
 Used for the assembly of accessories on profiles with 10 mm slot. It must be inserted from the edge. Raw steel.

52101000 1000 mm 1,150

Perfil en T insertable Acero
Insertable T-slot profile Steel



10 mm



Aplicación

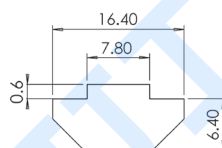
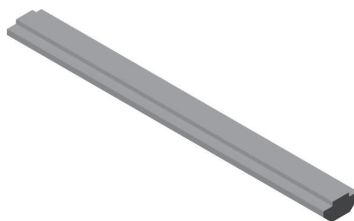
Para fijar accesorios a los perfiles con canal de 10 mm. Posibilidad de inserción desde cualquier parte del perfil mediante giro. Acero sin tratar.

Application

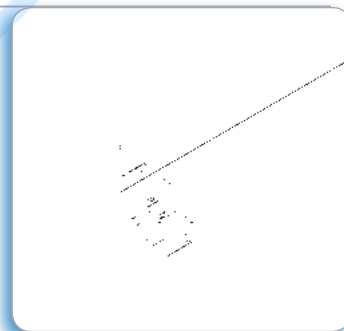
Used for the assembly of accessories on profiles with 10 mm slot. It can be inserted sideways along the profile slot. Raw steel.

52102000	1.000 mm	0,150

Perfil en T, canal 8 mm Acero
T-slot profile, 8 mm slot Steel



8 mm



Aplicación

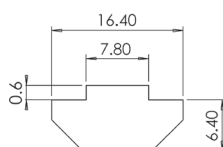
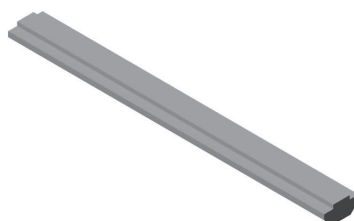
Para fijar accesorios o unir perfiles con canal de 8 mm. El perfil debe ser introducido por el extremo. Acero sin tratar.

Application

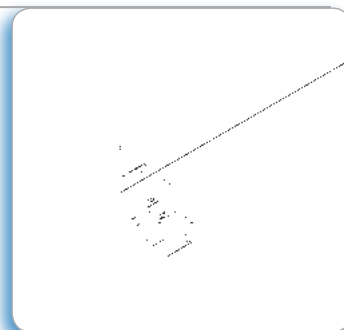
Used for the assembly of accessories and connection of profiles with 8 mm slot. It must be inserted from the front in the profile slot. Raw steel

52104000	1000 mm	0,3

Perfil en T, canal 8 mm Aluminio anodizado
T-slot profile, 8 mm slot Anodized aluminium



8 mm



Aplicación

Para fijar accesorios o unir perfiles con canal de 8 mm. El perfil debe ser introducido por el extremo.

Application

Used for the assembly of accessories and connection of profiles with 8 mm slot. It must be inserted from the front in the profile slot.

52103000	1000 mm	0,3